

# Consumer Price Index

## March 2018



Published by

STATISTICS BOTSWANA  
Private Bag 0024, Gaborone  
Tel: 3671300 Fax: 3952201  
Email: [info@statsbots.org.bw](mailto:info@statsbots.org.bw)

**March 2018**

Copyright © Statistics Botswana 2018



# **CONSUMER PRICE INDEX**

MARCH 2018

## **CONTENTS**

### **COMMENTARY**

Section 1: Headline Inflation

Section 2: Core Inflation

### **CHARTS**

1. National Rates of Inflation, March 2015 – March 2018
2. Monthly Changes in the Cost-of-Living Index, March 2015 – March 2018
3. Non-Tradable Inflation Rates, March 2015 – March 2018
4. Tradable Inflation Rates, March 2015 – March 2018

### **TABLES**

1. Cost-of-Living Index Series (January 2015 – March 2018)
2. National Cost-of-Living Group and Section Indices
3. Cost-of-Living Index by Tradability (January 2015 – March 2018)
4. Core Inflation Rates
5. Annual Average Inflation Rates 2007-2017

### **GLOSSARY**

## COMMENTARY

### Section 1: Headline Inflation

The annual inflation rate in March 2018 was 2.8 percent, registering a decrease of 0.4 of a percentage point on the February 2018 rate of 3.2 percent.

The inflation rates for regions between February 2018 and March 2018 showed that Rural Villages' declined to 2.3 percent from 2.7 percent, Cities & Towns went down to 3.3 percent from 3.6 percent and Urban Villages' also decreased to 2.6 percent from 2.9 percent between the two months.

The March national Consumer Price index moved from 104.4 in February 2018 to 104.6 in March 2018, an increase of 0.1 percent. The Cities & Towns' index realized a rise of 0.2 percent, moving from 104.7 to 104.9. The Urban Villages' index' rose by 0.2 percent, advancing from 104.1 in February 2018 to 104.2 in March 2018, while Rural Villages index registered an increase of 0.1 percent, moving from 104.4 to 104.5 between the two periods.

Group indices were generally moving at a stable pace between February 2018 and March 2018, recording changes of less than 1.0 percent.

The Transport index group registered a decrease of 0.1 percent, from 105.0 in February to 104.9 in March. This was attributed to a drop in the constituent section index of Purchase of Vehicles, which went down by 0.5 percent. The Transport index group accounted for 20.65 percent of CPI basket weights which implied its significant impact in the CPI overall inflation.

The Furnishing, House Hold Equipment & Routine Maintenance group index went up from 103.7 to 104.4, recording a rise of 0.6 percent between the two months. The rise was due to the general increase in the section indices especially Goods & Services for Household Maintenance (1.2 percent).

The Recreation & Culture index group moved from 102.9 to 103.4, registering an increase of 0.4 percent between February and March. The rise was owed to the general increase in some section indices particularly Audio Visual, Photographic & Information Processing Equipment (0.6 percent).

The Housing, Water, Electricity, Gas & Other Fuels index group advanced from 106.4 to 106.7, recording an increase of 0.3 percent between February and March. The increase was mainly attributable to the rise in section indices of Rent paid by Tenants and Materials for Maintenance & Repair of dwelling by 0.5 and 0.3 percent respectively.

The Miscellaneous Goods & Services index group moved from 104.3 to 104.5, registering an increase of 0.3 percent between February and March. The rise was owed to the overall increase in section indices except for the Social Protection and Insurance section indices which remained unchanged.

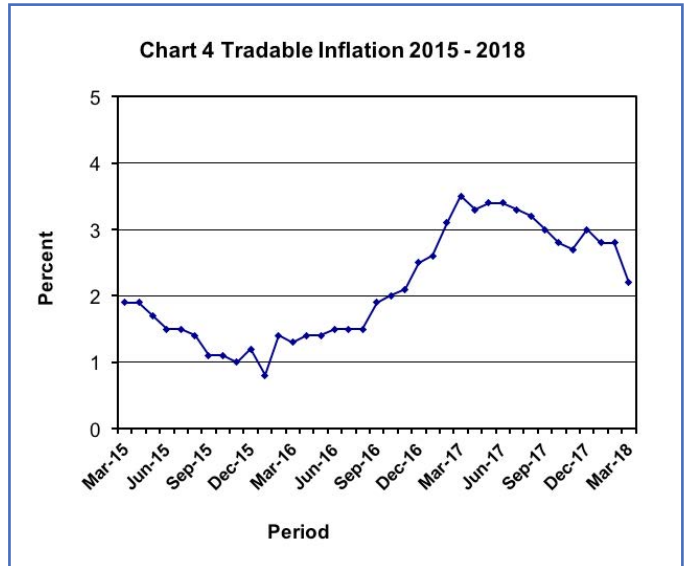
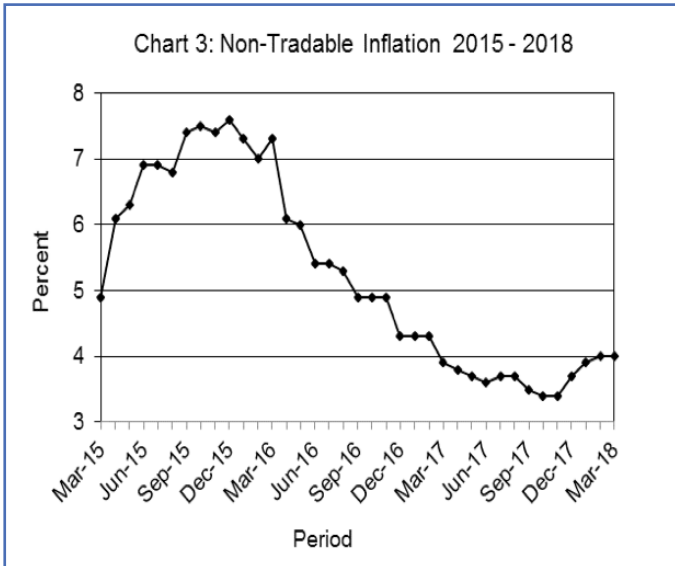
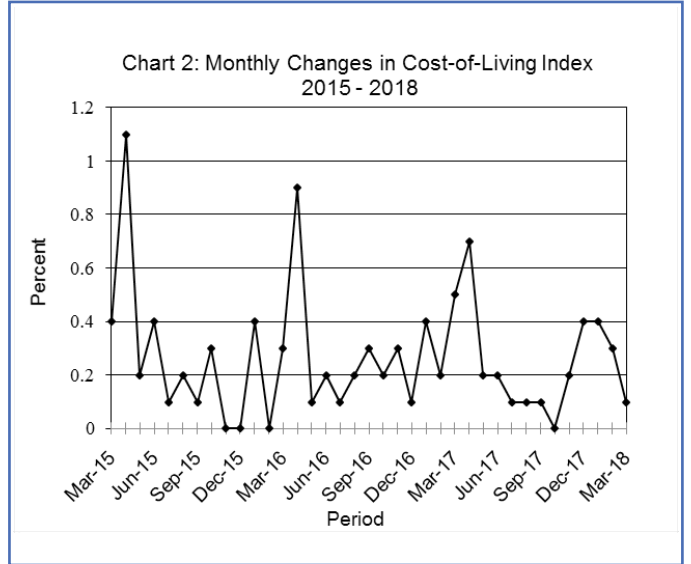
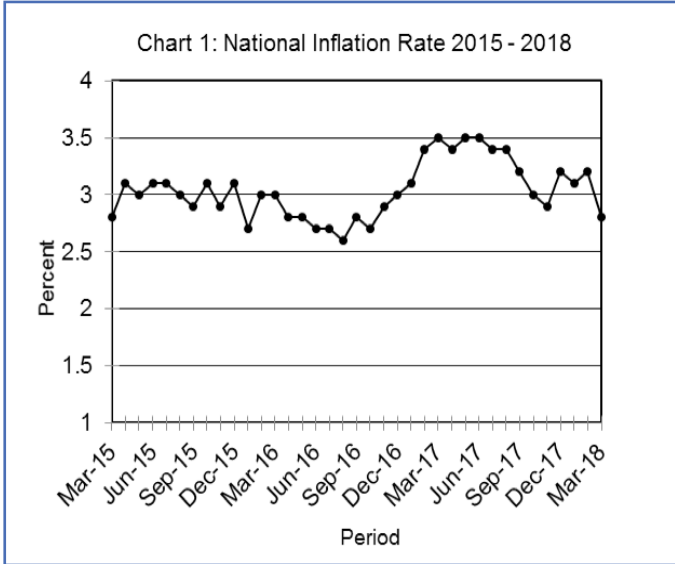
All-Tradable inflation rate was 2.2 percent in March, registering a decrease of 0.6 of a percentage point on the February 2018 rate of 2.8 percent. The Imported Tradable inflation rate went down from 3.8 percent in February to 3.1 percent in March. The Domestic Tradable inflation rate decreased from 0.3 percent in February to 0.1 percent in March. Non-Tradable inflation rate remained unchanged at 4.0 percent during the period under review.

The All-Tradable index moved from 104.4 in February to 104.5 in March, recording an increase of 0.1 percent. The Domestic Tradable index advanced from 103.0 in February to 103.2 in March, recording an increase of 0.2 percent. The Non-Tradable index moved from 104.5 in February to 104.8 in March, registering an increase of 0.2 percent, while the Imported Tradable index rose by 0.1 percent between February and March.

### Section 2: Core Inflation

The Trimmed Mean Core Inflation rate in March 2018 was 2.6 percent, a drop of 0.3 of a percentage point on the February 2018 rate of 2.9 percent. The Core Inflation rate by exclusion registered a decline of 0.2 of a percentage point moving from 2.2 percent in February to 2.0 percent in March.

## CHARTS



**A.N. Mujelantle**  
 Statistician General  
 13 April 2018

TABLES

TABLE 1: COST OF LIVING INDEX (September 2016 =100.0)

		Food	Alcohol and Tobacco	Clothing and Footwear	Housing	Furniture etc	Health	Transport	Com-muni-cation	Rec. & Culture	Edu-cation	Rest. & Hotels	Mis-cella-neous
Weights		16.51	7.83	6.27	14.90	6.39	3.62	20.65	4.27	2.92	3.34	2.76	10.55
<b>2015</b>	Jan	96.5	94.9	89.7	88.4	94.1	94.4	107.0	99.5	92.9	96.4	92.6	87.0
	Feb	96.7	95.8	90.7	88.3	94.9	94.5	102.4	99.5	93.2	96.4	94.0	87.2
	Mar	96.7	96.8	91.4	88.9	95.5	94.6	102.5	99.5	93.3	96.4	94.5	87.2
	Apr	96.7	97.2	91.8	92.2	95.7	94.6	102.7	99.5	97.7	96.4	94.6	92.5
	May	96.7	97.5	92.3	92.1	95.9	96.9	102.7	100.0	97.9	96.4	94.8	92.5
	Jun	96.6	97.6	92.9	93.7	96.6	97.0	102.8	100.0	97.9	96.4	95.4	92.9
	Jul	96.7	97.8	93.3	93.7	96.7	97.3	102.9	100.0	98.1	96.4	95.6	93.0
	Aug	96.9	98.0	94.1	93.8	97.0	97.3	102.9	100.0	98.1	96.5	95.9	93.1
	Sept	97.0	97.3	94.6	96.0	97.6	97.5	101.8	100.0	98.2	96.5	96.2	93.1
	Oct	97.2	98.2	95.2	96.0	97.9	97.5	101.8	100.0	98.4	96.5	97.1	93.2
	Nov	97.2	98.4	95.6	95.9	97.8	97.6	101.8	100.0	98.5	96.5	97.3	93.2
	Dec	97.2	98.5	96.0	97.0	98.1	97.6	100.5	100.0	98.6	96.5	97.6	93.1
<b>2016</b>	Jan	97.6	98.6	96.8	97.1	98.2	97.6	100.5	100.0	98.9	99.9	97.9	93.6
	Feb	98.2	98.7	97.4	96.9	98.3	97.7	99.1	100.0	99.5	99.9	98.2	93.3
	Mar	98.5	98.8	98.0	98.2	98.5	97.8	99.2	100.0	99.6	99.9	98.4	93.5
	Apr	99.3	99.3	98.5	98.2	98.7	98.0	99.5	100.0	99.6	100.0	98.7	99.6
	May	99.4	99.4	98.9	98.2	98.8	99.9	99.5	100.0	99.7	100.0	98.9	99.6
	Jun	99.1	99.6	99.4	99.0	99.3	100.0	99.8	100.0	99.6	100.0	99.2	99.9
	Jul	99.3	99.9	99.6	99.0	99.4	100.0	99.9	100.0	99.7	100.0	99.3	100.0
	Aug	99.7	100.0	99.9	99.0	99.5	100.0	100.0	100.0	99.8	100.0	99.6	100.0
	Sept	100.0	100.0	100.0	100.0	100.0	100.0	100.0	100.0	100.0	100.0	100.0	100.0
	Oct	100.4	100.7	100.2	100.0	100.2	100.0	100.0	100.0	100.2	100.0	100.2	100.4
	Nov	100.9	101.2	100.6	100.1	100.6	100.2	100.1	100.0	100.2	100.0	100.5	100.5
	Dec	101.0	101.3	100.7	100.2	100.8	100.3	100.2	100.0	100.3	100.0	100.6	100.5
<b>2017</b>	Jan	101.9	102.3	101.2	100.4	101.2	100.8	99.7	100.1	100.7	104.0	101.4	100.7
	Feb	102.3	103.0	101.4	100.6	101.7	100.9	99.8	100.1	101.1	104.1	101.7	101.0
	Mar	102.8	103.6	101.7	101.0	102.1	101.1	100.9	100.1	101.3	104.1	102.0	101.4
	Apr	103.1	104.1	101.9	104.8	102.3	101.2	101.0	100.1	102.0	104.1	102.2	101.5
	May	103.4	104.7	102.1	104.9	102.4	101.2	101.1	100.2	102.0	104.1	102.5	101.6
	Jun	103.3	104.7	102.2	105.0	102.7	101.8	101.4	100.3	102.1	104.1	102.8	102.6
	Jul	103.6	104.8	102.6	105.1	102.8	102.0	101.4	100.3	102.2	104.2	103.3	102.6
	Aug	103.5	104.9	102.8	105.2	102.9	102.0	101.6	100.3	102.3	104.2	103.5	102.7
	Sept	102.8	105.0	103.0	105.8	103.1	102.0	101.7	101.3	102.2	104.2	103.7	102.8
	Oct	102.8	104.8	103.1	105.7	103.3	102.1	101.7	101.3	102.3	104.2	104.0	102.8
	Nov	102.6	104.6	103.1	105.7	103.4	102.2	102.7	101.3	102.2	104.2	104.0	102.9
	Dec	102.1	104.7	103.2	106.1	103.2	102.2	104.3	101.2	102.4	104.2	104.6	103.4
<b>2018</b>	Jan	102.3	104.8	103.3	106.2	103.4	102.3	104.7	101.2	102.6	109.8	104.9	103.7
	Feb	102.7	104.9	103.5	106.4	103.7	102.4	105.0	101.3	102.9	109.8	105.3	104.3
	Mar	102.8	105.0	103.7	106.7	104.4	102.5	104.9	101.3	103.4	109.8	105.4	104.5
<b>% Change on Last month</b>		0.1	0.1	0.2	0.3	0.6	0.1	(0.1)	0.0	0.4	0.0	0.1	0.3

**TABLE 1: COST OF LIVING INDEX (Cont.)**

		All Items Index	National Inflation Rate	Monthly Change	Towns & Cities Index	Urban Village Index	Rural Villages Index	Annual Inflation		
								Towns & Cities	Urban Villages	Rural Villages
								%	%	%
		100	%	%	41.8	34.5	23.7	%	%	%
<b>2015</b>	Jan	95.4	<b>3.6</b>	<b>0.8</b>	95.3	95.7	95.0	<b>3.6</b>	<b>3.7</b>	<b>3.7</b>
	Feb	95.0	<b>2.8</b>	<b>(0.4)</b>	94.9	95.2	95.0	<b>2.6</b>	<b>2.9</b>	<b>3.2</b>
	Mar	95.3	<b>2.8</b>	<b>0.4</b>	95.1	95.6	95.4	<b>2.5</b>	<b>2.8</b>	<b>3.6</b>
	Apr	96.4	<b>3.1</b>	<b>1.1</b>	96.5	96.3	96.1	<b>3.1</b>	<b>3.0</b>	<b>3.4</b>
	May	96.5	<b>3.0</b>	<b>0.2</b>	96.5	96.5	96.5	<b>3.0</b>	<b>2.8</b>	<b>3.6</b>
	Jun	96.9	<b>3.1</b>	<b>0.4</b>	96.9	96.9	96.6	<b>3.1</b>	<b>3.0</b>	<b>3.4</b>
	Jul	97.0	<b>3.1</b>	<b>0.1</b>	97.1	97.1	96.7	<b>3.1</b>	<b>3.0</b>	<b>3.5</b>
	Aug	97.2	<b>3.0</b>	<b>0.2</b>	97.2	97.3	96.9	<b>2.8</b>	<b>3.0</b>	<b>3.4</b>
	Sept	97.3	<b>2.9</b>	<b>0.1</b>	97.3	97.4	97.2	<b>2.9</b>	<b>2.8</b>	<b>3.3</b>
	Oct	97.6	<b>3.1</b>	<b>0.3</b>	97.7	97.6	97.2	<b>3.2</b>	<b>3.0</b>	<b>3.1</b>
	Nov	97.6	<b>2.9</b>	<b>0.0</b>	97.7	97.6	97.3	<b>2.9</b>	<b>2.7</b>	<b>3.0</b>
	Dec	97.6	<b>3.1</b>	<b>(0.0)</b>	97.7	97.5	97.4	<b>3.2</b>	<b>2.8</b>	<b>3.4</b>
<b>2016</b>	Jan	97.9	<b>2.7</b>	<b>0.4</b>	97.9	98.1	97.7	<b>2.7</b>	<b>2.6</b>	<b>2.8</b>
	Feb	97.9	<b>3.0</b>	<b>(0.0)</b>	97.7	98.2	97.9	<b>2.9</b>	<b>3.2</b>	<b>3.1</b>
	Mar	98.2	<b>3.0</b>	<b>0.3</b>	98.1	98.6	98.0	<b>3.1</b>	<b>3.2</b>	<b>2.7</b>
	Apr	99.1	<b>2.8</b>	<b>0.9</b>	99.0	99.4	98.7	<b>2.6</b>	<b>3.2</b>	<b>2.7</b>
	May	99.2	<b>2.8</b>	<b>0.1</b>	99.1	99.5	98.9	<b>2.7</b>	<b>3.1</b>	<b>2.5</b>
	Jun	99.4	<b>2.7</b>	<b>0.2</b>	99.4	99.7	99.1	<b>2.5</b>	<b>2.8</b>	<b>2.6</b>
	Jul	99.6	<b>2.7</b>	<b>0.1</b>	99.5	99.7	99.6	<b>2.5</b>	<b>2.7</b>	<b>3.0</b>
	Aug	99.7	<b>2.6</b>	<b>0.2</b>	99.6	99.9	99.8	<b>2.6</b>	<b>2.6</b>	<b>2.9</b>
	Sept	100.0	<b>2.8</b>	<b>0.3</b>	100.0	100.0	100.0	<b>2.8</b>	<b>2.7</b>	<b>2.9</b>
	Oct	100.2	<b>2.7</b>	<b>0.2</b>	100.2	100.2	100.2	<b>2.5</b>	<b>2.7</b>	<b>3.1</b>
	Nov	100.4	<b>2.9</b>	<b>0.3</b>	100.3	100.4	100.7	<b>2.7</b>	<b>2.9</b>	<b>3.5</b>
	Dec	100.5	<b>3.0</b>	<b>0.1</b>	100.5	100.4	100.8	<b>2.8</b>	<b>3.0</b>	<b>3.5</b>
<b>2017</b>	Jan	101.0	<b>3.1</b>	<b>0.4</b>	100.9	100.8	101.3	<b>3.1</b>	<b>2.8</b>	<b>3.6</b>
	Feb	101.2	<b>3.4</b>	<b>0.2</b>	101.1	101.1	101.6	<b>3.5</b>	<b>2.9</b>	<b>3.8</b>
	Mar	101.7	<b>3.5</b>	<b>0.5</b>	101.6	101.6	102.1	<b>3.6</b>	<b>3.0</b>	<b>4.2</b>
	Apr	102.5	<b>3.4</b>	<b>0.7</b>	102.3	102.4	102.8	<b>3.3</b>	<b>3.0</b>	<b>4.2</b>
	May	102.7	<b>3.5</b>	<b>0.2</b>	102.5	102.6	103.0	<b>3.4</b>	<b>3.1</b>	<b>4.1</b>
	Jun	102.9	<b>3.5</b>	<b>0.2</b>	102.8	102.9	103.0	<b>3.4</b>	<b>3.3</b>	<b>3.9</b>
	Jul	103.0	<b>3.4</b>	<b>0.1</b>	102.9	102.9	103.3	<b>3.5</b>	<b>3.2</b>	<b>3.7</b>
	Aug	103.1	<b>3.4</b>	<b>0.1</b>	103.0	103.0	103.4	<b>3.4</b>	<b>3.2</b>	<b>3.6</b>
	Sept	103.2	<b>3.2</b>	<b>0.1</b>	103.2	103.0	103.4	<b>3.2</b>	<b>3.0</b>	<b>3.4</b>
	Oct	103.2	<b>3.0</b>	<b>0.0</b>	103.2	102.9	103.5	<b>3.0</b>	<b>2.7</b>	<b>3.3</b>
	Nov	103.4	<b>2.9</b>	<b>0.2</b>	103.4	103.0	103.7	<b>3.1</b>	<b>2.6</b>	<b>3.0</b>
	Dec	103.7	<b>3.2</b>	<b>0.4</b>	104.0	103.3	103.9	<b>3.6</b>	<b>2.9</b>	<b>3.1</b>
<b>2018</b>	Jan	104.1	<b>3.1</b>	<b>0.4</b>	104.5	103.7	104.1	<b>3.6</b>	<b>2.9</b>	<b>2.8</b>
	Feb	104.4	<b>3.2</b>	<b>0.3</b>	104.7	104.1	104.4	<b>3.6</b>	<b>2.9</b>	<b>2.7</b>
	Mar	104.6	<b>2.8</b>	<b>0.1</b>	104.9	104.2	104.5	<b>3.3</b>	<b>2.6</b>	<b>2.3</b>
<b>% Change on last month</b>		<b>0.1</b>			<b>0.2</b>	<b>0.2</b>	<b>0.1</b>			



**TABLE 2 :National Cost-of-Living Group and Section Indices (September 2016=100.0)**

Group Section	Weights	This month Mar 2018	Last month Feb 2017	3 months ago Dec 2017	6 months ago Sep 2017	12 months ago Mar 2017	Percentage Change on:				
							Last month	3 months ago	6 months ago	12 months ago	
<b>1</b>	<b>Food &amp; Non-Alcoholic Beverages</b>	<b>16.51</b>	<b>102.8</b>	<b>102.7</b>	<b>102.1</b>	<b>102.8</b>	<b>102.8</b>	<b>0.1</b>	<b>0.7</b>	<b>0.1</b>	<b>0.1</b>
1.1	Bread & Cereals	5.27	96.7	97.1	97.5	99.9	102.0	(0.5)	(0.8)	(3.3)	(5.2)
1.2	Meat (Fresh, Chilled & Frozen)	2.66	105.3	105.2	104.1	103.6	104.4	0.1	1.2	1.7	0.9
1.3	Fish (Fresh, Chilled & Frozen)	0.17	105.0	104.5	104.2	104.6	101.8	0.5	0.8	0.3	3.1
1.4	Milk, Cheese & Milk Products	1.49	101.5	101.2	101.2	101.0	99.7	0.3	0.3	0.5	1.8
1.5	Oils & Fats	0.70	100.7	100.5	100.0	100.4	102.1	0.2	0.7	0.2	(1.4)
1.6	Fruit	0.86	110.2	108.2	106.8	104.9	107.0	1.8	3.2	5.0	2.9
1.7	Vegetables	1.80	108.2	106.8	105.2	103.8	103.5	1.3	2.8	4.3	4.5
1.8	Sugar, Jam, Honey, Chocolate & Confectionery	1.29	110.7	110.9	110.2	110.8	104.9	(0.2)	0.5	(0.1)	5.6
1.9	Food not else where Classified	0.99	102.6	102.6	100.6	102.5	101.2	0.0	2.1	0.1	1.4
1.10	Coffee, Tea & Cocoa	0.36	115.2	114.7	113.5	111.7	104.7	0.4	1.5	3.2	10.0
1.11	Mineral Waters, Soft Drinks, Fruits & Veg. Juices	0.92	101.6	101.6	101.3	102.8	100.8	0.0	0.4	(1.1)	0.8
<b>2</b>	<b>Alcoholic Beverages &amp; Tobacco</b>	<b>7.83</b>	<b>105.0</b>	<b>104.9</b>	<b>104.7</b>	<b>105.0</b>	<b>103.6</b>	<b>0.1</b>	<b>0.2</b>	<b>(0.0)</b>	<b>1.4</b>
2.1	Alcoholic Beverages	6.19	104.7	104.6	104.5	105.0	104.0	0.1	0.2	(0.3)	0.7
2.2	Tobacco	1.65	106.0	106.0	105.6	104.9	101.9	0.0	0.4	1.0	4.0
<b>3</b>	<b>Clothing and Footwear</b>	<b>6.27</b>	<b>103.7</b>	<b>103.5</b>	<b>103.2</b>	<b>103.0</b>	<b>101.7</b>	<b>0.2</b>	<b>0.5</b>	<b>0.7</b>	<b>2.0</b>
3.1	Clothing	2.42	103.1	102.8	102.4	102.5	101.3	0.3	0.6	0.6	1.8
3.2	Other articles of Clothing	1.01	103.5	103.5	103.0	102.1	101.2	0.0	0.5	1.4	2.4
3.3	Cleaning, Repair & Hire	0.99	105.6	105.3	105.1	104.9	102.5	0.3	0.5	0.7	3.1
3.4	Footwear	1.85	103.5	103.3	103.1	103.0	102.0	0.1	0.3	0.4	1.4
<b>4</b>	<b>Housing, Water, Electr. Gas &amp; Other Fuels</b>	<b>14.90</b>	<b>106.7</b>	<b>106.4</b>	<b>106.1</b>	<b>105.8</b>	<b>101.0</b>	<b>0.3</b>	<b>0.5</b>	<b>0.8</b>	<b>5.7</b>
4.1	Rent paid by Tenants	6.25	103.1	102.7	102.7	102.2	100.6	0.5	0.5	0.9	2.5
4.2	Materials for Maintenance & Repair of dwellings	4.29	104.6	104.3	103.5	103.5	102.0	0.3	1.1	1.1	2.5
4.3	Water Supply & Misc. Services	1.50	125.4	125.4	125.4	125.4	100.0	0.0	0.0	0.0	25.4
4.4	Electricity Gas and other Fuels	2.86	107.7	107.6	107.3	107.0	100.6	0.0	0.3	0.6	7.0
<b>5</b>	<b>Furnishing, H/H Equipment &amp; Routine Maintenance</b>	<b>6.39</b>	<b>104.4</b>	<b>103.7</b>	<b>103.2</b>	<b>103.1</b>	<b>102.1</b>	<b>0.6</b>	<b>1.1</b>	<b>1.2</b>	<b>2.3</b>
5.1	Furniture & Furnishing	1.65	104.1	103.9	103.5	102.7	102.1	0.2	0.6	1.4	2.0
5.2	Carpets & Other Floor Coverings	0.24	103.7	103.4	103.5	103.8	102.2	0.3	0.2	(0.0)	1.5
5.3	Household Textiles	0.41	103.8	103.6	102.9	102.6	101.7	0.2	0.8	1.1	2.0
5.4	Household Appliances	0.85	103.3	103.0	102.6	102.5	102.0	0.3	0.7	0.8	1.3
5.5	Glassware, Tableware & Household Utensils	0.40	100.6	100.5	100.8	101.2	100.8	0.1	(0.2)	(0.6)	(0.2)
5.6	Small Tools, Miscellaneous Accessories	0.06	102.9	102.9	102.2	102.1	100.9	0.0	0.7	0.8	2.0
5.7	Goods & Services for H/hold Maintenance	2.78	105.5	104.3	103.6	103.9	102.3	1.2	1.9	1.5	3.1

TABLE 2 :National Cost-of-Living Group and Section Indices

(September 2016=100.0) Cont

Group Section	Weights	This month Mar 2018	Last month Feb 2017	3 months ago Dec 2017	6 months ago Sep 2017	12 months ago Mar 2017	Percentage Change on:				
							Last month	3 months ago	6 months ago	12 months ago	
<b>6</b>		<b>3.62</b>	<b>102.5</b>	<b>102.4</b>	<b>102.2</b>	<b>102.0</b>	<b>101.1</b>	<b>0.1</b>	<b>0.3</b>	<b>0.4</b>	<b>1.4</b>
6.1	Medical Products, App. & Equip.	0.81	106.5	106.0	105.4	105.2	103.9	0.5	1.0	1.2	2.5
6.2	Out-patient Services	0.70	102.4	102.4	102.2	101.7	101.1	0.0	0.2	0.7	1.3
6.3	Hospital Services	2.10	101.0	101.0	101.0	101.0	100.0	0.0	0.0	0.0	1.0
<b>7</b>		<b>20.65</b>	<b>104.9</b>	<b>105.0</b>	<b>104.3</b>	<b>101.7</b>	<b>100.9</b>	<b>(0.1)</b>	<b>0.6</b>	<b>3.2</b>	<b>4.0</b>
7.1	Purchase of Vehicles	5.29	102.8	103.3	100.9	100.3	98.3	(0.5)	1.9	2.5	4.5
7.2	Operation of Personal Transport	11.13	107.6	107.6	107.4	102.7	102.4	0.0	0.2	4.7	5.1
7.3	Transport Services	4.22	100.5	100.5	100.5	100.5	100.0	0.0	0.0	0.0	0.5
<b>8</b>		<b>4.27</b>	<b>101.3</b>	<b>101.3</b>	<b>101.2</b>	<b>101.3</b>	<b>100.1</b>	<b>0.0</b>	<b>0.1</b>	<b>0.0</b>	<b>1.2</b>
8.1	Postal Services	0.15	126.5	126.5	126.5	126.5	100.0	0.0	0.0	0.0	26.5
8.2	Telephone & Telefax Equipment	0.71	102.5	102.2	101.7	102.4	100.5	0.3	0.8	0.1	2.0
8.3	Telephone & Telefax Services	3.41	100.0	100.0	100.0	100.0	100.0	0.0	0.0	0.0	0.0
<b>9</b>		<b>2.92</b>	<b>103.4</b>	<b>102.9</b>	<b>102.4</b>	<b>102.2</b>	<b>101.3</b>	<b>0.4</b>	<b>0.9</b>	<b>1.1</b>	<b>2.1</b>
9.1	Audio Visual, Photographic & Info. Proce. Equip.	1.96	103.4	102.8	102.1	101.9	101.7	0.6	1.2	1.4	1.7
9.2	Other Recreational Items & Equip.	0.46	101.7	101.6	101.5	101.3	100.5	0.1	0.2	0.4	1.2
9.3	Recreational & Cultural Services	0.37	105.0	104.9	104.9	104.8	100.2	0.1	0.1	0.1	4.8
9.4	Newspapers, Books & Stationary	0.13	104.5	104.2	104.0	103.2	101.0	0.3	0.5	1.2	3.5
<b>10</b>		<b>3.34</b>	<b>109.8</b>	<b>109.8</b>	<b>104.2</b>	<b>104.2</b>	<b>104.1</b>	<b>0.0</b>	<b>5.4</b>	<b>5.4</b>	<b>5.5</b>
10.1	Pre-Primary & Primary Education	0.80	121.8	121.8	105.4	105.4	105.1	0.0	15.6	15.6	15.9
10.2	Secondary & Tertiary Education	2.54	106.0	106.0	103.8	103.8	103.8	0.0	2.1	2.1	2.2
<b>11</b>		<b>2.76</b>	<b>105.4</b>	<b>105.3</b>	<b>104.6</b>	<b>103.7</b>	<b>102.0</b>	<b>0.1</b>	<b>0.8</b>	<b>1.6</b>	<b>3.3</b>
11.1	Restaurants, Cafes and the Like	2.31	105.8	105.7	105.0	104.0	102.3	0.2	0.8	1.7	3.5
11.2	Accommodation Services	0.45	103.3	103.3	102.6	102.3	100.8	0.0	0.6	0.9	2.4
<b>12</b>		<b>10.55</b>	<b>104.5</b>	<b>104.3</b>	<b>103.4</b>	<b>102.8</b>	<b>101.4</b>	<b>0.3</b>	<b>1.1</b>	<b>1.7</b>	<b>3.2</b>
12.1	Personal Care	1.71	104.3	104.2	103.3	104.2	102.5	0.2	1.0	0.1	1.8
12.2	Personal Effects N.E.C.	1.24	104.6	103.6	103.7	103.5	102.2	1.0	0.8	1.1	2.4
12.3	Social Protection	0.07	120.9	120.9	102.1	102.1	102.0	0.0	18.5	18.5	18.6
12.4	Insurance	4.73	103.7	103.7	102.5	101.0	101.0	0.0	1.2	2.7	2.7
12.5	Financial Services	0.79	104.4	104.1	103.5	103.1	101.4	0.3	0.9	1.2	3.0
12.6	Taxes Licences, Fees	2.01	106.2	105.7	105.3	105.1	100.7	0.5	0.9	1.0	5.4
	<b>All-Items Index</b>	<b>100.0</b>	<b>104.6</b>	<b>104.4</b>	<b>103.7</b>	<b>103.2</b>	<b>101.7</b>	<b>0.1</b>	<b>0.8</b>	<b>1.4</b>	<b>2.8</b>

**TABLE 3: COST-OF-LIVING INDEX BY TRADABILITY (September 2016 = 100.0)**

		All Items		Non-Tradable		Domestic Tradable		Imported Tradable		All Tradable	
		Index	Inflation	Index	Inflation	Index	Inflation	Index	Inflation	Index	Inflation
Weights		100		35.83		20.39		43.77		64.17	
<b>2015</b>	Jan	95.4	<b>3.6</b>	89.8	<b>4.9</b>	95.5	<b>4.2</b>	99.4	<b>2.5</b>	97.9	<b>3.1</b>
	Feb	95.0	<b>2.8</b>	90.0	<b>5.1</b>	96.0	<b>3.4</b>	98.0	<b>0.9</b>	97.2	<b>1.9</b>
	Mar	95.3	<b>2.8</b>	90.4	<b>4.9</b>	96.6	<b>3.6</b>	98.2	<b>1.0</b>	97.6	<b>1.9</b>
	Apr	96.4	<b>3.1</b>	93.0	<b>6.1</b>	96.9	<b>3.5</b>	98.5	<b>0.9</b>	97.9	<b>1.9</b>
	May	96.5	<b>3.0</b>	93.3	<b>6.3</b>	96.9	<b>3.2</b>	98.6	<b>0.8</b>	98.0	<b>1.7</b>
	Jun	96.9	<b>3.1</b>	94.3	<b>6.9</b>	96.9	<b>3.0</b>	98.7	<b>0.6</b>	98.0	<b>1.5</b>
	Jul	97.0	<b>3.1</b>	94.4	<b>6.9</b>	96.9	<b>2.9</b>	99.0	<b>0.7</b>	98.2	<b>1.5</b>
	Aug	97.2	<b>3.0</b>	94.5	<b>6.8</b>	97.0	<b>2.9</b>	99.3	<b>0.6</b>	98.4	<b>1.4</b>
	Sept	97.3	<b>2.9</b>	95.3	<b>7.4</b>	96.6	<b>2.7</b>	99.2	<b>0.2</b>	98.2	<b>1.1</b>
	Oct	97.6	<b>3.1</b>	95.4	<b>7.5</b>	97.3	<b>3.3</b>	99.3	<b>0.2</b>	98.3	<b>1.1</b>
	Nov	97.6	<b>2.9</b>	95.4	<b>7.4</b>	97.4	<b>3.4</b>	99.3	<b>-0.4</b>	98.6	<b>1.0</b>
	Dec	97.6	<b>3.1</b>	96.0	<b>7.6</b>	97.4	<b>3.5</b>	98.9	<b>0.0</b>	98.3	<b>1.2</b>
<b>2016</b>	Jan	97.9	<b>2.7</b>	96.3	<b>7.3</b>	98.0	<b>2.6</b>	99.1	<b>-0.3</b>	98.6	<b>0.8</b>
	Feb	97.9	<b>3.0</b>	96.4	<b>7.0</b>	98.4	<b>2.5</b>	98.8	<b>0.7</b>	98.6	<b>1.4</b>
	Mar	98.2	<b>3.0</b>	96.9	<b>7.3</b>	98.6	<b>2.1</b>	99.0	<b>0.8</b>	98.8	<b>1.3</b>
	Apr	99.1	<b>2.8</b>	98.7	<b>6.1</b>	99.1	<b>2.3</b>	99.4	<b>0.9</b>	99.3	<b>1.4</b>
	May	99.2	<b>2.8</b>	98.9	<b>6.0</b>	99.4	<b>2.5</b>	99.4	<b>0.8</b>	99.4	<b>1.4</b>
	Jun	99.4	<b>2.7</b>	99.4	<b>5.4</b>	99.3	<b>2.5</b>	99.6	<b>0.9</b>	99.5	<b>1.5</b>
	Jul	99.6	<b>2.7</b>	99.4	<b>5.4</b>	99.5	<b>2.8</b>	99.7	<b>0.7</b>	99.6	<b>1.5</b>
	Aug	99.7	<b>2.6</b>	99.5	<b>5.3</b>	99.9	<b>3.0</b>	99.9	<b>0.6</b>	99.9	<b>1.5</b>
	Sept	100.0	<b>2.8</b>	100.0	<b>4.9</b>	100.0	<b>3.5</b>	100.0	<b>0.9</b>	100.0	<b>1.9</b>
	Oct	100.2	<b>2.7</b>	100.1	<b>4.9</b>	100.3	<b>3.1</b>	100.2	<b>0.9</b>	100.2	<b>1.9</b>
	Nov	100.4	<b>2.9</b>	100.1	<b>4.9</b>	100.7	<b>3.4</b>	100.5	<b>1.2</b>	100.6	<b>2.1</b>
	Dec	100.5	<b>3.0</b>	100.1	<b>4.3</b>	100.9	<b>3.6</b>	100.6	<b>1.8</b>	100.7	<b>2.5</b>
<b>2017</b>	Jan	101.0	<b>3.1</b>	100.4	<b>4.3</b>	102.2	<b>4.3</b>	100.8	<b>1.7</b>	101.2	<b>2.6</b>
	Feb	101.2	<b>3.4</b>	100.5	<b>4.3</b>	102.7	<b>4.3</b>	101.1	<b>2.4</b>	101.6	<b>3.1</b>
	Mar	101.7	<b>3.5</b>	100.8	<b>3.9</b>	103.1	<b>4.6</b>	101.8	<b>2.9</b>	102.2	<b>3.5</b>
	Apr	102.5	<b>3.4</b>	102.4	<b>3.8</b>	103.4	<b>4.3</b>	102.1	<b>2.7</b>	102.5	<b>3.3</b>
	May	102.7	<b>3.5</b>	102.6	<b>3.7</b>	103.7	<b>4.3</b>	102.3	<b>2.9</b>	102.7	<b>3.4</b>
	Jun	102.9	<b>3.5</b>	103.0	<b>3.6</b>	103.5	<b>4.2</b>	102.5	<b>2.9</b>	102.8	<b>3.4</b>
	Jul	103.0	<b>3.4</b>	103.1	<b>3.7</b>	103.4	<b>3.8</b>	102.7	<b>3.0</b>	103.0	<b>3.3</b>
	Aug	103.1	<b>3.4</b>	103.1	<b>3.7</b>	103.2	<b>3.4</b>	103.0	<b>3.1</b>	103.1	<b>3.2</b>
	Sept	103.2	<b>3.2</b>	103.5	<b>3.5</b>	102.6	<b>2.6</b>	103.1	<b>3.1</b>	103.0	<b>3.0</b>
	Oct	103.2	<b>3.0</b>	103.5	<b>3.4</b>	102.5	<b>2.2</b>	103.2	<b>3.0</b>	103.0	<b>2.8</b>
	Nov	103.4	<b>2.9</b>	103.5	<b>3.4</b>	102.3	<b>1.6</b>	103.6	<b>3.1</b>	103.3	<b>2.7</b>
	Dec	103.7	<b>3.2</b>	103.9	<b>3.7</b>	102.3	<b>1.3</b>	104.3	<b>3.7</b>	103.7	<b>3.0</b>
<b>2018</b>	Jan	104.1	<b>3.1</b>	104.4	<b>3.9</b>	102.7	<b>0.5</b>	104.6	<b>3.8</b>	104.0	<b>2.8</b>
	Feb	104.4	<b>3.2</b>	104.5	<b>4.0</b>	103.0	<b>0.3</b>	105.0	<b>3.8</b>	104.4	<b>2.8</b>
	Mar	104.6	<b>2.8</b>	104.8	<b>4.0</b>	103.2	<b>0.1</b>	105.0	<b>3.1</b>	104.5	<b>2.2</b>
<b>% Change on last month</b>		<b>0.1</b>		<b>0.2</b>		<b>0.2</b>		<b>0.1</b>		<b>0.1</b>	

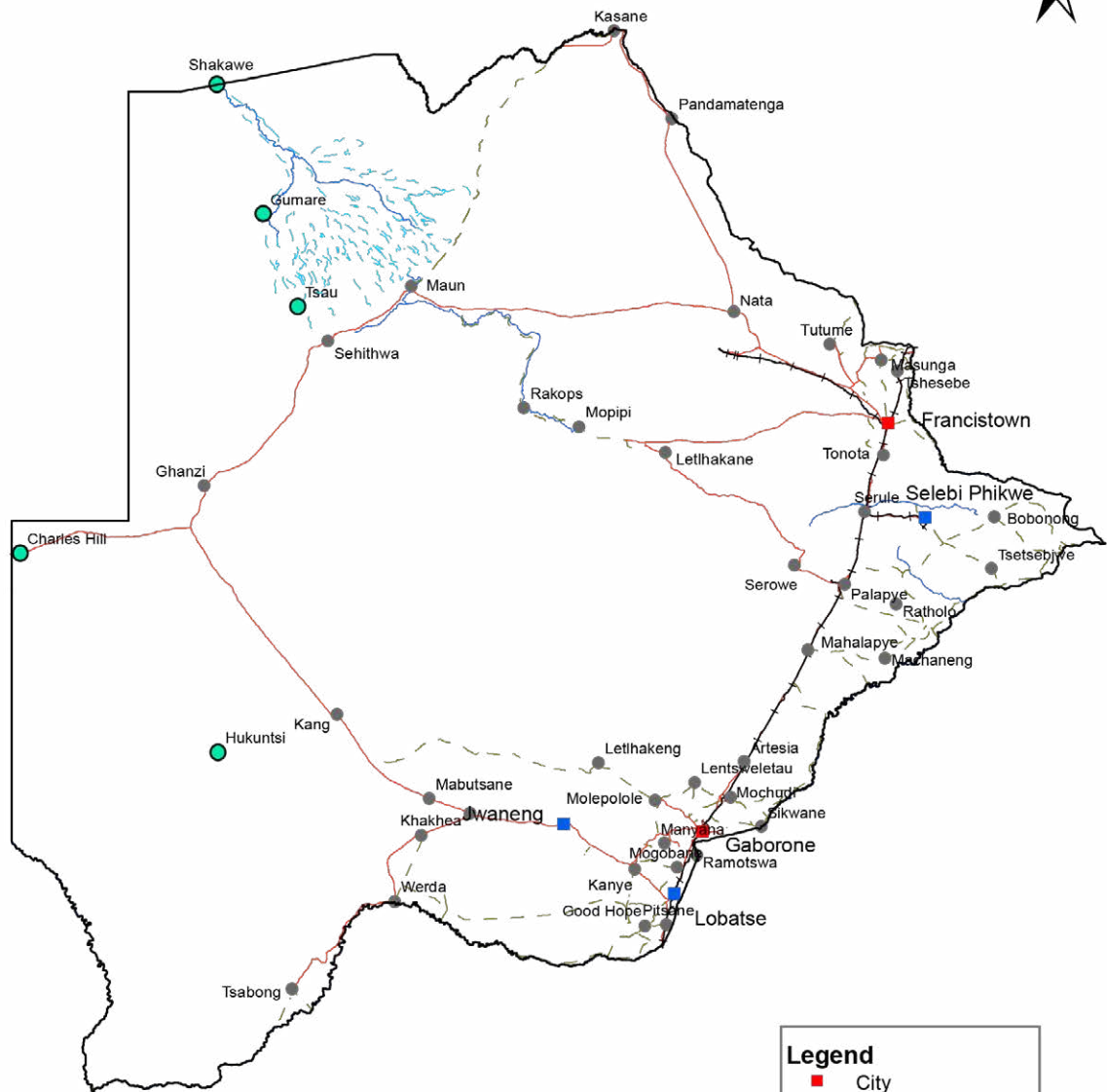
**TABLE 4: Core Inflation Rates by Exclusion and Trimmed Mean**

Year	Month	Consumer Price Index (Trimmed Mean) (September 2016 = 100)	Core Monthly Inflation Rate (Trimmed Mean) (percentage)	Consumer Price Index (Excluding Administered Prices) (September 2016 = 100)	Core Monthly Inflation (Excluding Administered Prices) (percentage)
<b>2015</b>					
	Jan	92.6	3.6	93.7	4.8
	Feb	92.7	3.2	94.3	4.8
	Mar	93.0	3.3	94.7	4.8
	Apr	95.5	3.6	95.3	4.8
	May	95.7	3.5	95.4	4.7
	Jun	96.1	3.6	95.8	4.7
	Jul	96.1	3.6	96.0	4.7
	Aug	96.4	3.5	96.2	4.6
	Sept	96.8	3.4	96.6	4.8
	Oct	97.1	3.6	96.9	5.0
	Nov	97.1	3.3	97.0	4.7
	Dec	97.0	3.2	97.1	4.5
<b>2016</b>					
	Jan	97.5	2.8	97.5	4.0
	Feb	97.7	2.6	97.8	3.7
	Mar	97.9	2.5	98.1	3.7
	Apr	98.5	2.4	98.9	3.9
	May	98.7	2.3	99.1	3.8
	Jun	98.7	2.4	99.3	3.6
	Jul	99.5	2.5	99.5	3.6
	Aug	99.7	2.4	99.7	3.6
	Sept	100.0	2.6	100.0	3.6
	Oct	100.2	2.2	100.2	3.4
	Nov	100.4	2.5	100.6	3.7
	Dec	100.5	2.5	100.7	3.7
<b>2017</b>					
	Jan	101.0	2.7	101.3	3.9
	Feb	101.1	2.9	101.6	3.9
	Mar	101.7	3.1	102.0	3.9
	Apr	102.0	3.1	102.2	3.3
	May	102.1	3.1	102.5	3.4
	Jun	102.4	2.9	102.6	3.3
	Jul	102.5	2.9	102.8	3.3
	Aug	102.6	2.9	102.9	3.3
	Sept	102.7	2.7	103.0	3.0
	Oct	102.7	2.6	103.0	2.8
	Nov	103.0	2.5	103.0	2.4
	Dec	103.5	2.9	103.0	2.3
<b>2018</b>					
	Jan	103.8	2.8	103.5	2.2
	Feb	104.1	2.9	103.8	2.2
	Mar	104.4	2.6	104.0	2.0

**Table 5: Average Annual Inflation ( September 2016=100)**

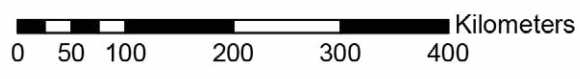
Group		Weights	2007	2008	2009	2010	2011	2012	2013	2014	2015	2016	2017
1	Food & Non-Alcoholic Beverages	16.51	11.2	20.2	14.7	3.6	6.9	8.0	5.4	3.0	1.3	2.7	3.4
2	Alcoholic Beverages,Tobacco & Narcotics	7.83	10.1	13.2	35.2	7.1	8.4	7.6	10.3	9.0	6.1	2.5	4.5
3	Clothing and Footwear	6.27	1.6	2.0	8.4	8.0	8.9	7.5	6.3	6.0	7.6	6.5	3.2
4	Housing, Water, Electr. Gas & Other Fuels	14.90	4.7	8.1	4.8	6.4	8.4	7.7	4.3	3.9	7.1	6.3	5.4
5	Furnishing, H/H Equipment& Routine Maintenance	6.39	4.9	6.0	11.9	9.4	9.0	7.3	4.9	5.0	6.1	3.0	3.3
6	Health	3.62	12.5	11.3	5.5	2.7	4.5	5.9	5.5	8.3	6.3	3.0	2.4
7	Transport	20.65	7.9	21.2	(8.4)	12.1	13.2	10.8	7.3	1.2	(5.1)	(2.7)	1.6
8	Communication	4.27	(5.1)	(0.3)	(0.3)	1.2	(3.0)	(1.4)	0.3	0.3	0.3	0.2	0.5
9	Recreation & Culture	2.92	(1.8)	2.3	5.0	6.0	8.3	5.8	4.5	4.2	5.7	3.0	2.2
10	Education	3.34	6.0	3.9	3.9	5.8	10.6	6.4	4.7	7.4	6.4	3.7	4.1
11	Restaurants & Hotels	2.76	15.1	12.7	18.8	9.0	9.3	8.4	7.9	7.6	5.5	4.0	3.7
12	Miscellaneous Goods & Services	10.55	4.3	4.9	3.8	7.0	5.3	2.0	1.2	5.2	7.2	7.5	3.9
All-Items Index		<b>100.0</b>	<b>7.1</b>	<b>12.6</b>	<b>8.2</b>	<b>6.9</b>	<b>8.5</b>	<b>7.5</b>	<b>5.9</b>	<b>4.4</b>	<b>3.1</b>	<b>2.8</b>	<b>3.3</b>

# CPI AREA COVERAGE



**Legend**

- City
- Towns
- Major Villages
- Rivers
- Main Roads
- - - Secondary Roads
- + + + Railway
- - - Swamp



## GLOSSARY

**Consumer Price Index (CPI)** is an index which measures price changes in goods and services with reference to a base period.

**Inflation** is a measurement of prices movement of goods and services in a particular country.

**Domestic Tradable** refers to the goods and services which a country (Botswana) can export to other countries.

**Imported Tradable** represents the goods and services which a country (Botswana) imports from other countries (trading partners).

**Non-Tradable** refers to the goods and services which a country cannot export or import to other countries.

**All –Tradable** refers to the total of Domestic and Imported tradable.

**Trimmed Mean Core Inflation**- attempts to remove 8 percent (by weight) of the commodity sub-groups with the largest price changes at each of the ends of an ordered series of price changes in any given month.

**Core inflation** by Exclusion is a measure used to remove the volatility inherent in prices that are only adjusted periodically and not always in response to currently prevailing market forces.

A photograph of a metal shopping cart filled with groceries, including bread, bananas, tomatoes, and a jar, in a supermarket aisle. The background is blurred, showing shelves of products. The text "Consumer Price Index" and "March 2018" is overlaid on the left side of the image.

# Consumer Price Index

March 2018